

Font Finder

What Files are Included in this Folder

Font Finder 1.0
Font Finder 1.0 docs
Register

About Font Finder

Font Finder is actually three utilities in one:

Font Finder - View different fonts and find special characters. Learn their keystroke sequence and ASCII code. Copy individual characters to the clipboard for pasting in other documents.

Title Builder - Create text with differing fonts, sizes, and styles. Great for creating mixed type headlines. Invaluable when using foreign language fonts, like Cyril or Thai. Copy your newly-created title to the clipboard for pasting into other documents.

Converter - Convert measurements between inches, picas, points and centimeters. Enter one and the other three auto-calculate. Also, calculate a fraction's decimal value (ie: $1/32 = 0.03125$). You select the numerator and denominator, it auto-calculates.

System Requirements

1. Macintosh System 7.1 or higher (any CPU)
2. AppleScript 1.1 extension (part of System 7.1 and higher. Also available free from Apple: 1-800-767-2775)

Font Finder is written in AppleScript. AppleScript is highly compatible and stable on all Macintosh machines with System 7 or higher installed, including Copland, the new operating system coming out soon from Apple. This compatibility and stability is why this language was chosen.

Installing Font Finder

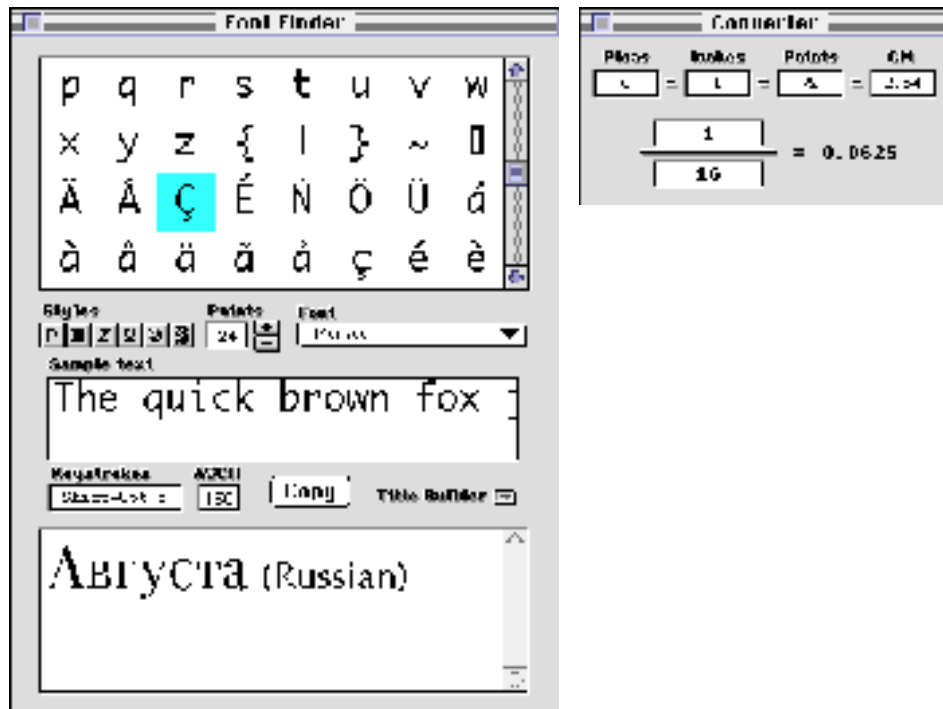
The AppleScript extension must be installed on your computer. To check if it is, simply open Font Finder. If it runs, it is there. You could also look in the extensions folder of the System Folder.

The Font Finder utility can be placed anywhere on your computer. A handy place for it is in the Apple Menu Items folder of the System Folder. The program occupies 478K of disk space and needs a minimum 640K of RAM to run.

If you would like to use a smaller version of Font Finder, please visit our web site and download "Font Finder 1.0 mini". This version is smaller yet runs EXACTLY the same as Font Finder. It requires an extension called FaceSpan (included in the download) and occupies 112K of disk space and needs a minimum of 512K of RAM to run.

Using Font Finder and Converter

When you start Font Finder you will see a splash screen with the name and logo. Click 'OK' to continue without registering or click 'Register' for information on registering. If you click 'OK', the Font Finder and Converter windows will appear:



Everything should be self-explanatory. If you need help, turn on balloon help. (The upper right corner of the menu bar has a question-mark icon. Hold that down and select 'Show Balloons.')

To add a character to Title Builder, simply double-click it. The Title Builder window will let you select, copy, paste, and clear. If you have copied a phrase from another program and need to insert a special character, click in the Title Builder window and paste. Put the cursor at the point in the text you want to insert the character. Once you are satisfied with your title, click the 'Copy' button and return to your program. The title is in the clipboard for pasting into your document.

Font Finder supports Drag and Drop to make it easier to work with Title Builder. Simply drop the text you want to edit into the Title Builder window and then drag it to either the desktop or your document.

The Converter is divided into two parts. The top half automatically converts from one measurement to another. Enter a value in any of the four windows, press Tab or Return and the other three values automatically calculate. The bottom half is equally simple. Enter either a numerator or denominator in the fraction, Tab or Return, and the decimal value is automatically calculated.

Special Characters

It is important to note that fonts differ in the display of special characters. Not all fonts will display the character '®' when you press Opt r. Some special characters within a font will change with different point sizes. For example, in the Geneva font a capital, unlauded Y (ÿ), ASCII code 217, keystrokes Opt u Shift Y, show assorted animals:

Points

Character Shown

10, 20

ÿ, Ÿ (an animal to some)

12, 24	ÿ, Ÿ
14	ÿ
18	ÿ
all other sizes	ÿ

In addition, different dialects will change the special characters. Apple changes a computer's dialect by substituting different versions of standard fonts (like Geneva). To see the substitutions, switch to the installed dialect and scroll through Geneva. You will see the characters and how to type them. Make sure your special characters stay the same when you change sizes, fonts and dialects.

Registering Font Finder

Font Finder has the following pricing:

- single user licenses, \$10 per user

A Site License costs \$200 and covers all locations for your organization within a 160 kilometer radius of your site (100 miles). One big advantage of a Site License is that you do not need to keep track of how many people at your site are using the software. A World-Wide License costs \$1000 and it covers all locations for your organization on the planet Earth.

Paying for Font Finder is fairly simple. Open the Register program that accompanies Font Finder. Enter your name, your email address, and the number of single user licenses you desire for each program you wish to purchase (or Site or World-Wide licenses). Save or Copy or Print the data from the Register program and send the data and payment to Kagi Shareware. More specifics on the Register program to follow. Kagi Shareware handles the payment processing.

If paying with credit card or First Virtual, you can email or fax the data to Kagi Shareware. Their email address is shareware@kagi.com and their fax number is +1 510 652 6589. You can either Copy the data from Register and paste into the body of an email message or you can Save the data to a file and you can attach that file to an email message. There is no need to compress the data file, it's already pretty small. If you have a fax modem, just Print the data to the Kagi fax number.

Payments sent via email are processed within 3 to 4 days. You will receive an email acknowledgement when it is processed. Payments sent via fax take up to 10 days and if you provide a correct internet email address you will receive an email acknowledgement.

If you are paying with Cash or USD Check you should print the data using the Register application and send it to the address shown on the form, which is:

Kagi Shareware
 1442-A Walnut Street #392-SY
 Berkeley, California 94709-1405
 USA

You can pay with a wide variety of cash from different countries but at present if you pay via check, it must be a check drawn in US Dollars. Kagi Shareware cannot accept checks in other currencies, the conversion rate for non-USD checks is around USD15 per check and

that is just not practical.

If you have a purchasing department, you can enter all the data into the Register program and then select Invoice as your payment method. Print three copies of the form and send it to your accounts payable people. You might want to highlight the line that mentions that they must include a copy of the form with their payment.

Kagi Shareware cannot invoice your company; you need to generate the invoice and handle all the paperwork on your end.

Please do not fax or email payment forms that indicate Cash, Check or Invoice as the payment method. As far as we know, there is still no technology to transfer physical objects via fax or email and without the payment, the form cannot be processed.

Payments sent via postal mail take time to reach Kagi Shareware and then up to 10 days for processing. Again, if you include a correct email address, you will hear from Kagi Shareware when the form is processed.

Benefits of Registering

The primary benefit to registering Font Finder is that you are automatically entitled to all version 1 updates. If you include an email address in your registration you will automatically be sent a notice to the new version and how to get it.

The second benefit to registering Font Finder is that you skip the opening splash screen and go straight to the utility. Once you send in your registration form and fee, Bishop Shareware will provide you with a registration code. We prefer to send it to you via email. If you do not have an email address, please enter your complete postal address and please remember, we do not know what country you live in so please enter that into the postal address also.

Feel free to distribute this program to anyone you want. Be sure to include the related files (Font Finder 1.0 docs, Register). Thank you for your help!

Contacting Bishop Shareware

Mail: Bishop Shareware
c/o Kagi Shareware
1442-A Walnut St #392-SY
Berkeley, CA 94709-1405 • USA

email: bishopshare@kagi.com
WWW: <http://members.aol.com/bishopsys/>

Feel free to write with your problems, suggestions or bug reports. We are looking to release a version 2.0 with features and improvements our customers desire.

©1996 Bishop Shareware. All rights reserved.

Macintosh and AppleScript are trademarks of Apple Computer, Inc.
FaceSpan is a trademark of Software Designs Unlimited, Inc.